

*Alpha*

FABRICS™  
ENGINEERED FOR EXCELLENCE

# FABRIC & COLOR RANGE

2

INTERNAL PLAIN  
FABRICS

4

INTERNAL TEXTURED  
FABRICS

8

INTERNAL SUNSCREEN  
FABRICS

12

EXTERNAL ZIP SYSTEM  
FABRICS

14

MORE

# Internal Plain Fabrics

**INT** ROLLER PANEL ROMAN VERTICAL

## Introducing **AVOCA & BONDI**

A classy and contemporary plain range  
of fabrics to suit any decor.



### Applications

Roller, Panel, Roman Blinds

### Fabrication Methods

#### Cutting:

Cold Cut, Ultrasonic, Crush Cut, Laser

#### Seaming/Hemming:

Thermal, High-Frequency, Ultrasonic, Sewing

### Environmental Benefits

Lead free, OEKO-TEX 100, GREENGUARD

### Colour Fastness

SGS 6-8 Grade

# Avoca Blockout

## Internal Plain Fabrics



### Technical Parameters

#### AVOCA

COMPOSITION \_\_\_\_\_  
 FINISHED WIDTH \_\_\_\_\_  
 THICKNESS \_\_\_\_\_  
 WEIGHT \_\_\_\_\_  
 ROLL LENGTH \_\_\_\_\_  
 BREAKING STRENGTH \_\_\_\_\_

#### BLOCKOUT

100% Polyester  
 2m, 2.5m, 3m  
 89mm, 127mm  
 0.34mm  
 340g/m<sup>2</sup>  
 30M  
 Blockout

78.74in, 98.43in, 118 in  
 3.5in, 5in  
 0.013in  
 11.99 oz/yd<sup>2</sup>  
 32.8yd

# Bondi Blockout



### Technical Parameters

#### BONDI

COMPOSITION \_\_\_\_\_  
 FINISHED WIDTH \_\_\_\_\_  
 THICKNESS \_\_\_\_\_  
 WEIGHT \_\_\_\_\_  
 ROLL LENGTH \_\_\_\_\_  
 BREAKING STRENGTH \_\_\_\_\_

#### LIGHT FILTERING

118in  
 0.021in  
 8.29 oz/yd<sup>2</sup>  
 32.8yd

#### BLOCKOUT

100% Polyester  
 3m      118in  
 0.6mm      0.024 in  
 400g/m<sup>2</sup>      14.11 oz/yd<sup>2</sup>  
 30M      32.8yd  
 Blockout



# Internal Textured Fabrics

**NT** ROLLER PANEL ROMAN

Introducing

**TOORAK  
GLENELG  
VAUCLUSE  
COTTESLOE  
DALKEITH**

Alpha introduces some of the most meticulously  
crafted textured fabrics to hit the Australian market.



# Toorak Blockout & Light Filtering

## Internal Textured Fabrics



TOORAK WHITE



TOORAK OFF WHITE



TOORAK SEED PEARL



TOORAK NOUGAT



TOORAK GREY STONE



TOORAK BLAZE



TOORAK SILVER



TOORAK STORM

### Technical Parameters

#### TOORAK

COMPOSITION \_\_\_\_\_  
 FINISHED WIDTH \_\_\_\_\_  
 THICKNESS \_\_\_\_\_  
 WEIGHT \_\_\_\_\_  
 ROLL LENGTH \_\_\_\_\_  
 BREAKING STRENGTH \_\_\_\_\_

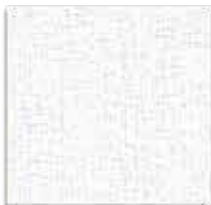
#### LIGHT FILTERING

100% Polyester  
 3 m 118 in  
 0.50 mm 0.020 in  
 235g/m<sup>2</sup> 8.28 oz/yd<sup>2</sup>  
 30 metres 32.8 yd  
 Semi-Blockout

#### BLOCKOUT

100% Polyester  
 3 m 118 in  
 0.65 mm 0.026 in  
 425g/m<sup>2</sup> 14.99 oz/yd<sup>2</sup>  
 30 metres 32.8 yd  
 Blockout

# Glenelg Blockout & Light Filtering



GLENELG WHITE



GLENELG CREAM



GLENELG SEED PEARL



GLENELG FOG



GLENELG BISCUIT



GLENELG CAPPUCCINO

### Technical Parameters

#### GLENELG

COMPOSITION \_\_\_\_\_  
 FINISHED WIDTH \_\_\_\_\_  
 THICKNESS \_\_\_\_\_  
 WEIGHT \_\_\_\_\_  
 ROLL LENGTH \_\_\_\_\_  
 BREAKING STRENGTH \_\_\_\_\_

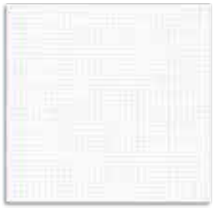
#### LIGHT FILTERING

100% Polyester  
 3 m 118 in  
 0.4 mm 0.016 in  
 220 g/m<sup>2</sup> 7.76 oz/yd<sup>2</sup>  
 30 metres 32.8 yd  
 Semi-Blockout

#### BLOCKOUT

100% Polyester  
 3 m 118 in  
 0.5 mm 0.020 in  
 330 g/m<sup>2</sup> 11.64 oz/yd<sup>2</sup>  
 30 metres 32.8 yd  
 Blockout





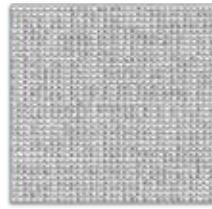
VAUCLUSE WHITE



VAUCLUSE OFF WHITE



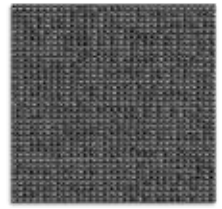
VAUCLUSE BISCUIT



VAUCLUSE SILVER GREY



VAUCLUSE PEWTER



VAUCLUSE SHALE

Technical Parameters

VAUCLUSE

COMPOSITION \_\_\_\_\_  
 FINISHED WIDTH \_\_\_\_\_  
 THICKNESS \_\_\_\_\_  
 WEIGHT \_\_\_\_\_  
 ROLL LENGTH \_\_\_\_\_  
 BREAKING STRENGTH \_\_\_\_\_

LIGHT FILTERING

100% Polyester  
 3 m 118 in  
 0.4 mm 0.016 in  
 190 g/m<sup>2</sup> 6.70 oz/yd<sup>2</sup>  
 30 metres 32.8 yd  
 Semi-Blockout

BLOCKOUT

100% Polyester  
 3 m 118 in  
 0.53 mm 0.021 in  
 364 g/m<sup>2</sup> 12.84 oz/yd<sup>2</sup>  
 30 metres 32.8 yd  
 Blockout



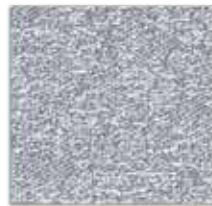
COTTESLOE WHITE PEARL



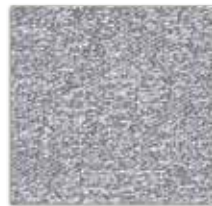
COTTESLOE CREAM PEARL



COTTESLOE BISCUIT PEARL



COTTESLOE SILVER PEARL



COTTESLOE SILVER CLOUD



COTTESLOE METALLIC



COTTESLOE BLACK PEARL

Technical Parameters

COTTESLOE

COMPOSITION \_\_\_\_\_  
 FINISHED WIDTH \_\_\_\_\_  
 THICKNESS \_\_\_\_\_  
 WEIGHT \_\_\_\_\_  
 ROLL LENGTH \_\_\_\_\_  
 BREAKING STRENGTH \_\_\_\_\_

LIGHT FILTERING

100% Polyester  
 3 m 118 in  
 0.48 mm 0.019 in  
 220 g/m<sup>2</sup> 7.76 oz/yd<sup>2</sup>  
 30 metres 32.8 yd  
 Semi-Blockout

BLOCKOUT

100% Polyester  
 3 m 118 in  
 0.55 mm 0.022 in  
 370 g/m<sup>2</sup> 13.05 oz/yd<sup>2</sup>  
 30 metres 32.8 yd  
 Blockout



DALKEITH WHITE



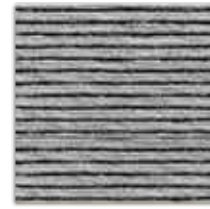
DALKEITH BEACH PEARL



DALKEITH CREAM PEARL



DALKEITH SILVER PEARL



DALKEITH MISTY PEARL



DALKEITH DARK PEARL

### Technical Parameters

#### DALKEITH

COMPOSITION \_\_\_\_\_  
 FINISHED WIDTH \_\_\_\_\_  
 THICKNESS \_\_\_\_\_  
 WEIGHT \_\_\_\_\_  
 ROLL LENGTH \_\_\_\_\_  
 BREAKING STRENGTH \_\_\_\_\_

#### LIGHT FILTERING

100% Polyester  
 3 m 118 in  
 0.5 mm 0.020 in  
 155 g/m<sup>2</sup> 5.47 oz/yd<sup>2</sup>  
 30 metres 32.8 yd  
 Semi-Blockout

#### BLOCKOUT

100% Polyester  
 3 m 118 in  
 0.65 mm 0.026 in  
 370 g/m<sup>2</sup> 13.05 oz/yd<sup>2</sup>  
 30 metres 32.8 yd  
 Blockout

### Product Certification



**Applications**

Roller, Panel, Roman Blinds

**Fabrication Methods**

Cutting:  
Seaming/Hemming:

Cold Cut, Ultrasonic, Crush Cut, Laser  
 Thermal, High-Frequency, Ultrasonic, Sewing

**Environmental Benefits**

Lead free, OEKO-TEX 100, GREENGUARD

**Colour Fastness**

SGS 6-8 Grade

# Internal Sunscreen Fabrics

**INT** ROLLER PANEL ROMAN

## Introducing **OMEGA**

Welcome to a brand new world of screens. Alpha is redefining the art of sunscreens. Ask for your free swatch book today.







Technical Parameters

## Omega 5%

|                   |                         |                          |
|-------------------|-------------------------|--------------------------|
| COMPOSITION       | 30% Polyester + 70% PVC |                          |
| FINISHED WIDTH    | 200, 250, 300 cm        | 79, 96, 118 in           |
| THICKNESS         | 0.54 mm                 | 0.022 in                 |
| WEIGHT            | 363g/m <sup>2</sup>     | 15.31 oz/yd <sup>2</sup> |
| COLOUR FASTNESS   | 8 Grade                 |                          |
| BREAKING STRENGTH | Warp 1600 N/5cm         | Weft 1500 N/5cm          |

## Omega 10%

|                   |                         |                         |
|-------------------|-------------------------|-------------------------|
| COMPOSITION       | 30% Polyester + 70% PVC |                         |
| FINISHED WIDTH    | 200, 250, 300 cm        | 79, 96, 118 in          |
| THICKNESS         | 0.55 mm                 | 0.022 in                |
| WEIGHT            | 410g/m <sup>2</sup>     | 17.3 oz/yd <sup>2</sup> |
| COLOUR FASTNESS   | 8 Grade                 |                         |
| YARN COUNT        | 48 * 46                 |                         |
| BREAKING STRENGTH | Warp 1600 N/5cm         | Weft 1500 N/5cm         |

Product Certification



|                               |   |
|-------------------------------|---|
| <b>Applications</b>           | Roller, Panel, Roman Blinds                 |
| <b>Fabrication Methods</b>    |   |
| <i>Cutting:</i>               | Cold Cut, Ultrasonic, Crush Cut, Laser      |
| <i>Seaming/Hemming:</i>       | Thermal, High-Frequency, Ultrasonic, Sewing |
| <b>Environmental Benefits</b> | Lead free, OEKO-TEX 100, GREENGUARD         |
| <b>Colour Fastness</b>        | SGS 6-8 Grade                               |

# Internal Sunscreen Fabrics

**NT** ROLLER PANEL ROMAN

Introducing

## DIAMOND & PLATINUM

Welcome to a brand new world of screens. Alpha is redefining the art of sunscreens. Ask for your free swatch book today.





# Diamond 5%

## Internal Sunscreen Fabrics



DIAMOND WHITE



DIAMOND WHITE PEARL



DIAMOND MIST GREY



DIAMOND LIGHT GREY



DIAMOND MAMBA



DIAMOND CHARCOAL GREY



DIAMOND CHARCOAL BRONZE



DIAMOND CHARCOAL

### Technical Parameters

#### DIAMOND

COMPOSITION \_\_\_\_\_  
 FINISHED WIDTH \_\_\_\_\_  
 THICKNESS \_\_\_\_\_  
 WEIGHT \_\_\_\_\_  
 ROLL LENGTH \_\_\_\_\_

#### SUNSCREEN

30% Polyester 70% PVC  
 3m 118 in  
 0.7 mm 0.028 in  
 415g/m<sup>2</sup> 14.64 oz/yd<sup>2</sup>  
 30 metres 32.8 yd

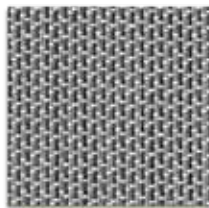
# Platinum 3%



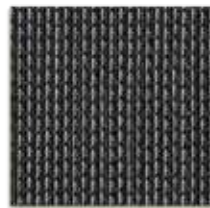
PLATINUM WHITE



PLATINUM PEARL



PLATINUM GREY MIST



PLATINUM CHARCOAL MIST

### Technical Parameters

#### PLATINUM

COMPOSITION \_\_\_\_\_  
 FINISHED WIDTH \_\_\_\_\_  
 THICKNESS \_\_\_\_\_  
 WEIGHT \_\_\_\_\_  
 ROLL LENGTH \_\_\_\_\_

#### SUNSCREEN

30% Polyester 70% PVC  
 3m 118 in  
 0.6 mm 0.024 in  
 405g/m<sup>2</sup> 14.29 oz/yd<sup>2</sup>  
 30 metres 32.8 yd

### Product Certification



#### Applications

Roller, Panel, Roman Blinds

#### Fabrication Methods

**Cutting:**  
**Seaming/Hemming:**

Cold Cut, Ultrasonic, Crush Cut, Laser  
 Thermal, High-Frequency, Ultrasonic, Sewing

#### Environmental Benefits

Lead free, OEKO-TEX 100, GREENGUARD

#### Colour Fastness

SGS 6-8 Grade



# External Zip System Fabrics

**XT** EXTERNAL STRAIGHT DROP, SIDE CHANNEL AND ZIP AWNINGS

Introducing

**XT1**

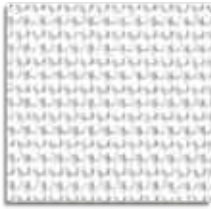
Specifically engineered for Zip systems, high tensile fiberglass/PVC significantly reduces puckering and stretching giving a long lasting fabric with incredible fire resistance.

**XT2**

A quality PVC, Polyester external fabric for everyday use with a competitive advantage.



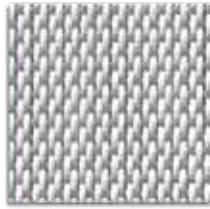
|                               |  |
|-------------------------------|--|
| <b>Applications</b>           | External straight drop, side channel and zip awnings |
| <b>Fabrication Methods</b>    |  |
| <i>Cutting:</i>               | Cold Cut, Ultrasonic, Crush Cut, Laser               |
| <i>Seaming/Hemming:</i>       | Thermal, High-Frequency, Ultrasonic, Sewing          |
| <b>Environmental Benefits</b> | Lead free, OEKO-TEX 100, GREENGUARD                  |
| <b>Colour Fastness</b>        | SGS 6-8 Grade  |



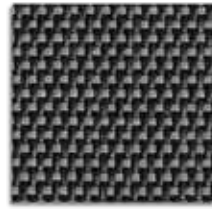
XT1 WHITE



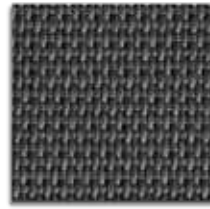
XT1 WHITE LINEN



XT1 WHITE GREY



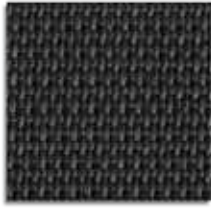
XT1 CHARCOAL GREY



XT1 MONUMENT



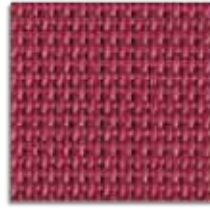
XT1 SABLE



XT1 CHARCOAL



XT1 GREEN



XT1 REG

Technical Parameters

XT1 EXTERIOR

|                   |                          |                          |
|-------------------|--------------------------|--------------------------|
| COMPOSITION       | 38% Fiberglass + 62% PVC |                          |
| FINISHED WIDTH    | 3.20m                    | 126in                    |
| THICKNESS         | 0.62mm                   | 0.024 in                 |
| WEIGHT            | 495g/m <sup>2</sup>      | 17.46 oz/yd <sup>2</sup> |
| ROLL LENGTH       | 30M                      | 32.8yd                   |
| COLOUR FASTNESS   | 8 Grade                  |                          |
| BREAKING STRENGTH | Warp 2000 N/5cm          | Weft 1800 N/5cm          |

FIBREGLASS CLEARVIEW 6%



XT2 WHITE



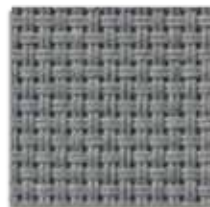
XT2 WHITE STONE



XT2 GREY



XT2 DOES SKIN



XT2 DARK GREY



XT2 CHARCOAL GREY



XT2 METALLIC  
BRONZE



XT2 CHARCOAL  
BRONZE



XT2 MONUMENT



XT2 CHARCOAL

Technical Parameters

XT2 EXTERIOR

|                   |                         |                          |
|-------------------|-------------------------|--------------------------|
| COMPOSITION       | 30% Polyester + 70% PVC |                          |
| FINISHED WIDTH    | 3.20m                   | 126in                    |
| THICKNESS         | 0.75mm                  | 0.030in                  |
| WEIGHT            | 520g/m <sup>2</sup>     | 18.34 oz/yd <sup>2</sup> |
| COLOUR FASTNESS   | 8 Grade                 |                          |
| YARN COUNT        | 36 * 36                 |                          |
| BREAKING STRENGTH | Warp 2600 N/5cm         | Weft 2600 N/5cm          |

POLYESTER

# CERTIFICATIONS

---



Supporting an organisation's aims and objectives, an ISO 9001 QMS documents the processes, procedures, and responsibilities for achieving quality policies and objectives. Based on eight quality management principles, the ISO 9001:2015 standard defines the way an organisation operates to meet the requirements of its customers and stakeholders (Customer focus, Leadership, Involvement of People, Process approach, Organisational context, Continual improvement, Fact-based decision making, Risk-based thinking)



RoHS is a product level compliance based on the European Union's Directive 2002/95/EC, the Restriction of the Use of certain Hazardous Substances in Electrical and Electronic Equipment (RoHS). Products compliant with this directive do not exceed the allowable amounts of the following restricted materials: lead, mercury, cadmium, hexavalent chromium, polybrominated biphenyls (PBB) and polybrominated diphenyl ethers (PBDE), with some limited exemptions.



Oeko-Tex labels and certificates confirm the human-ecological safety of textile products and leather articles from all stages of production (raw materials and fibres, yarns, fabrics, ready-to-use end products) along the textile value chain. Some also attest to socially and environmentally sound conditions in production facilities.



Products that are Greenguard Indoor Air Quality Certified meet strict chemical emissions limits and are designed for use in office environments and other indoor spaces. Greenguard Indoor Air Quality Certification gives credence to manufacturers' sustainability claims, backing them with empirical scientific data from an unbiased, third-party organisation.



The National Fire Protection Association (NFPA) is an international nonprofit organisation devoted to eliminating death, injury, property and economic loss due to fire, electrical and related hazards. As of 2018, the NFPA claims to have 50,000 members and 9,000 volunteers working with the organization through its 250 technical committees.



# TECHNOLOGIES

---



BASF SE is a German multinational chemical company and the largest chemical producer in the world. The BASF Group comprises subsidiaries and joint ventures in more than 80 countries and operates six integrated production sites and 390 other production sites in Europe, Asia, Australia, the Americas and Africa. Its headquarters is located in Ludwigshafen, Germany. BASF has customers in over 190 countries and supplies products to a wide variety of industries. Despite its size and global presence, BASF has received relatively little public attention since it abandoned manufacturing and selling BASF-branded consumer electronics products in the 1990s.



Clariant AG is a Swiss multinational speciality chemicals company, formed in 1995 as a spin-off from Sandoz. The company is focused on four business areas: care chemicals (consumer and industrial); catalysis; natural resources (oil & mining, minerals); and plastics & coatings. Headquartered in Muttenz, Switzerland,[4] the public company encompasses 110 operating companies in 53 countries. Major manufacturing sites are located in Europe, North America, South America, China, and India. In 2015, sales from continuing operations were 5.8 billion CHF.

# OFFICE

---



6 Joule Place Tuggerah NSW 2259 Australia

+612 4302 1679

[sales@alphafabrics.com.au](mailto:sales@alphafabrics.com.au)

[alphafabrics.com.au](http://alphafabrics.com.au)

# *Alpha* | FABRICS™

ENGINEERED FOR EXCELLENCE

6 Joule Place Tuggerah NSW 2259 Australia

+612 4302 1679

[sales@alphafabrics.com.au](mailto:sales@alphafabrics.com.au)

[alphafabrics.com.au](http://alphafabrics.com.au)

